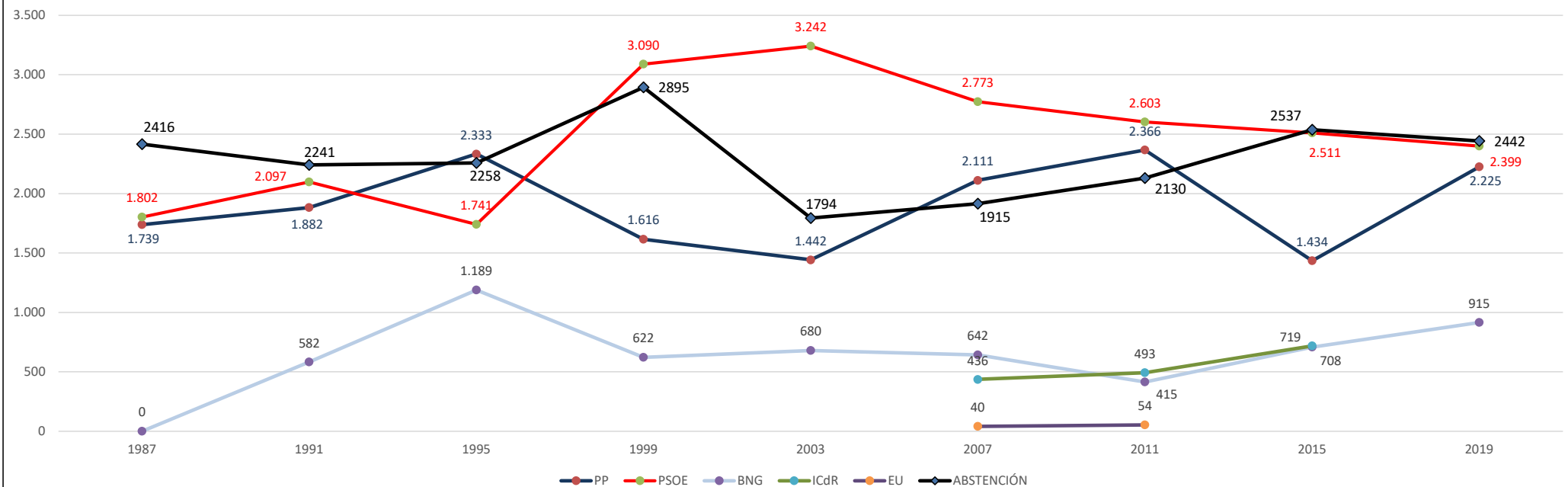


Evolución Municipales

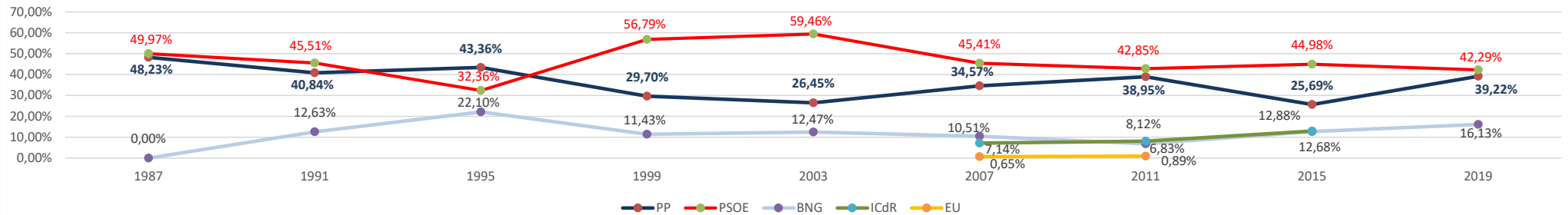
	1987	%	1991	%	1995	%	1999	%	2003	%	2007	%	2011	%	2015	%	2019	%
PP	1.739	48,23%	1.882	40,84%	2.333	43,36%	1.616	29,70%	1.442	26,45%	2.111	34,57%	2.366	38,95%	1.434	25,69%	2.225	39,22%
PSOE	1.802	49,97%	2.097	45,51%	1.741	32,36%	3.090	56,79%	3.242	59,46%	2.773	45,41%	2.603	42,85%	2.511	44,98%	2.399	42,29%
BNG	0	0,00%	582	12,63%	1.189	22,10%	622	11,43%	680	12,47%	642	10,51%	415	6,83%	708	12,68%	915	16,13%
ICdR											436	7,14%	493	8,12%	719	12,88%		
EU											40	0,65%	54	0,89%				
BLANCO	25		15		41		59		55		62		73		86		65	
NULOS	40		32		76		54		33		43		70		124		69	
ABSTENCIÓN	2.416	35,29%	2.241	32,73%	2.258	29,56%	2.895	34,73%	1.794	24,76%	1.915	23,87%	2.130	25,96%	2.537	31,25%	2.442	30,09%

GENSO:	6.847		6.847		7.638		8.336		7.246		8.022		8.204		8.119		8.115	
VOTOS:	3.606	52,67%	4.608	67,30%	5.380	70,44%	5.441	65,27%	5.452	75,24%	6.107	76,13%	6.074	74,04%	5.582	68,75%	5.673	69,91%
VÁLIDOS:	3.541		4.561		5.263		5.328		5.364		6.002		5.877		5.372		5.539	
Dif.PP-PSOE	-1,75%		-4,67%		11,00%		-27,09%		-33,02%		-10,84%		-3,90%		-19,29%		-3,07%	

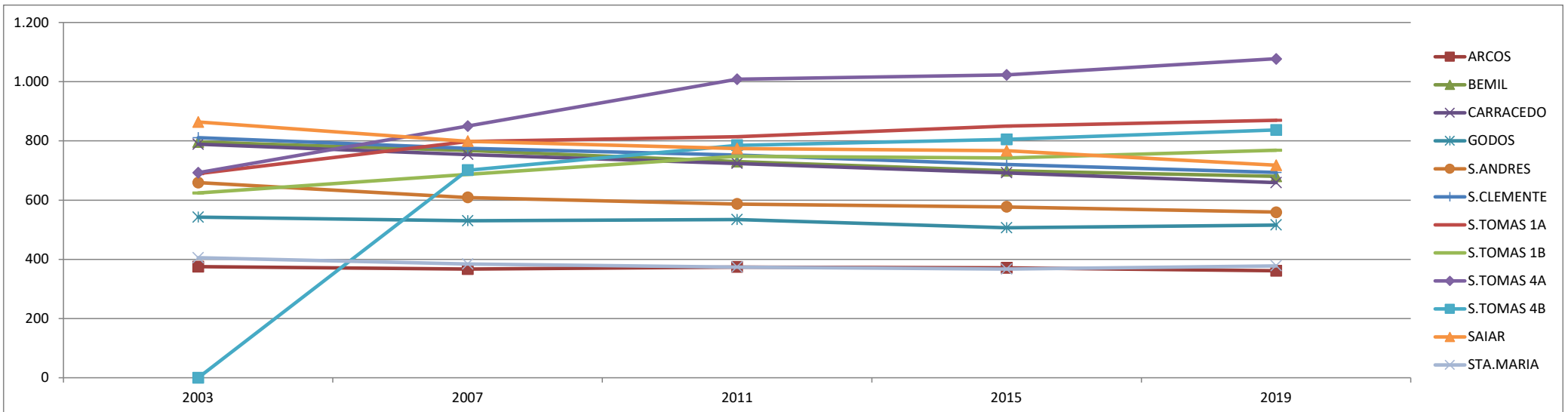
Evolución en número de votos 1987 a 2019



Evolución en porcentaje de votos 1987 a 2019

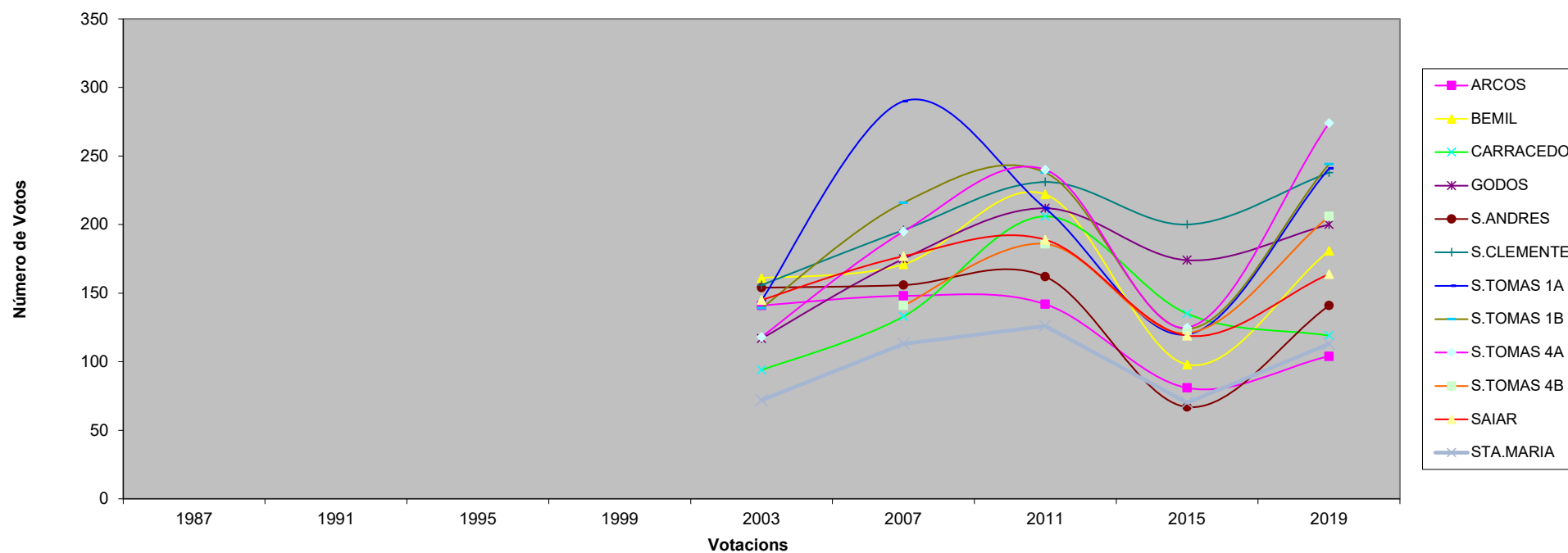


CENSO	2003	2007	2011	2015	2019
ARCOS	375	367	374	371	361
BEMIL	796	768	730	699	680
CARRACEDO	789	754	724	692	659
GODOS	542	530	534	506	516
S.ANDRES	659	609	587	577	559
S.CLEMENTE	811	775	752	720	693
S.TOMAS 1A	689	798	814	850	869
S.TOMAS 1B	624	687	748	742	768
S.TOMAS 4A	692	850	1.008	1.023	1.077
S.TOMAS 4B	0	701	785	805	837
SAIAR	864	799	774	767	718
STA.MARIA	405	384	374	367	378
TOTAL	7.246	8.022	8.204	8.119	8.115



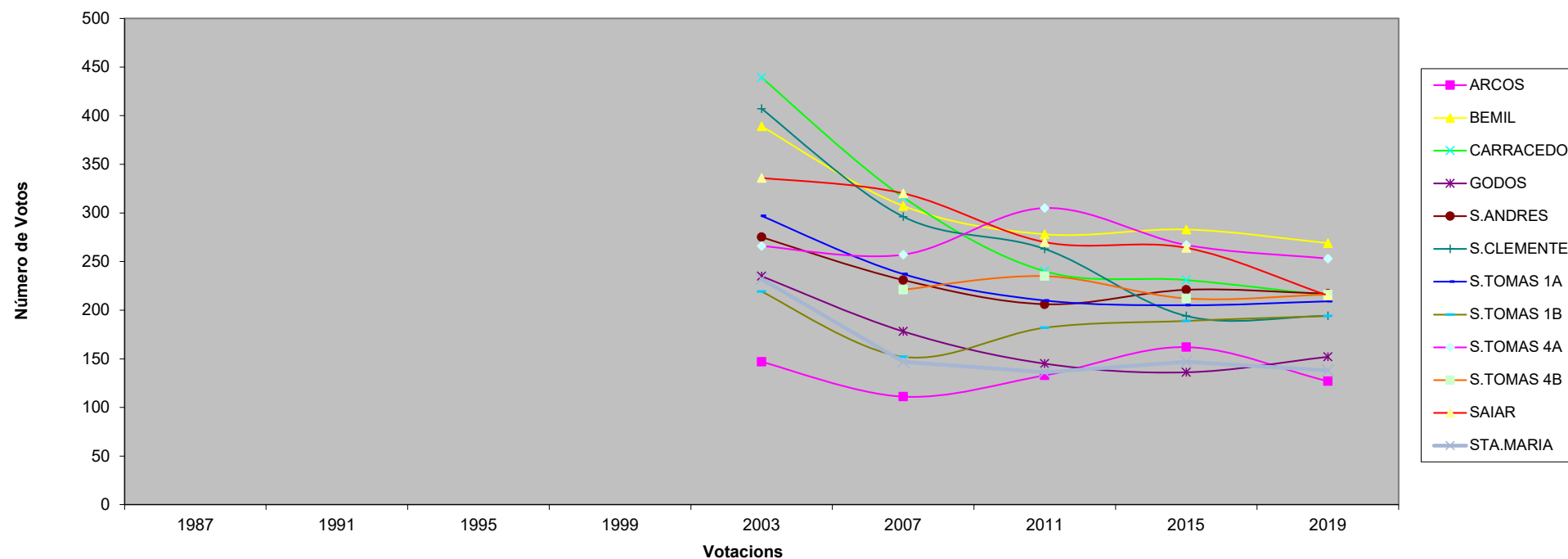
PP	1987	1991	1995	1999	2003	2007	2011	2015	2019
ARCOS					141	148	142	81	104
BEMIL					161	171	222	98	181
CARRACEDO					94	133	206	135	119
GODOS					117	175	212	174	200
S.ANDRES					154	156	162	67	141
S.CLEMENTE					156	196	231	200	238
S.TOMAS 1A					145	290	212	120	241
S.TOMAS 1B					139	216	238	124	244
S.TOMAS 4A					118	195	240	125	274
S.TOMAS 4B						141	186	121	206
SAIAR					145	177	189	119	164
STA.MARIA					72	113	126	70	113
	1.739	1.882	2.333	1.616	1.442	2.111	2.366	1.434	2.225
CASCO URBAN	0	0	0	0	402	842	876	490	965

Evolución do Voto do PP



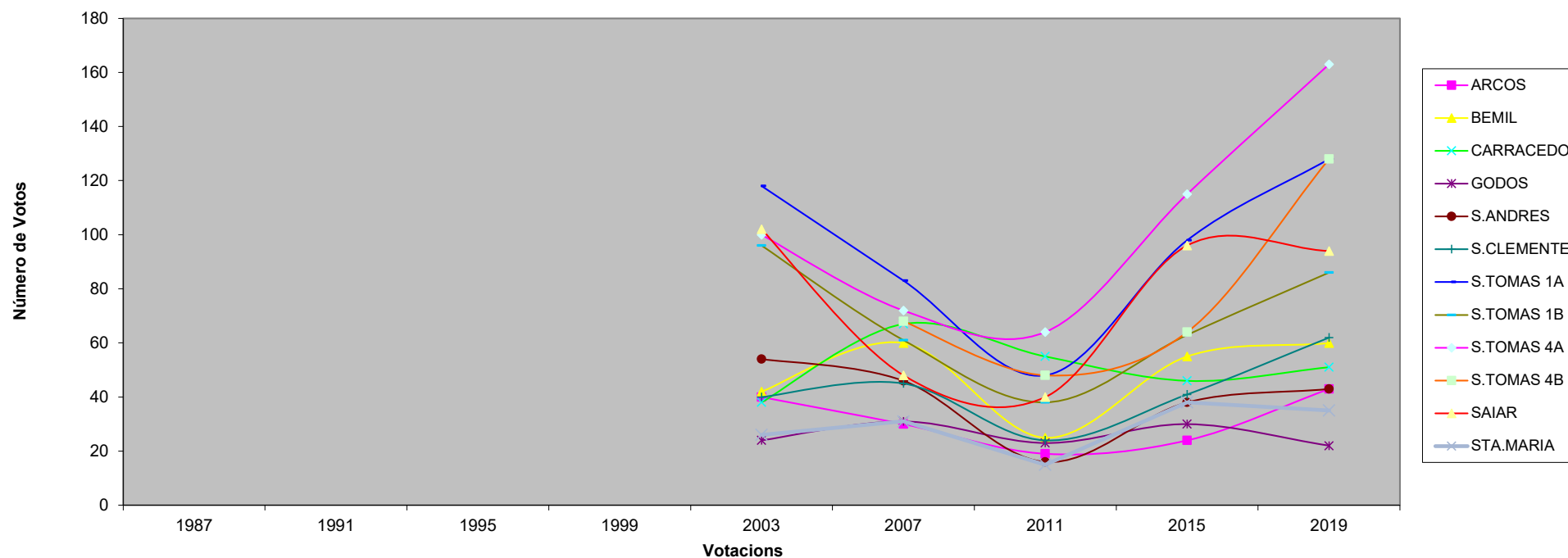
PSOE	1987	1991	1995	1999	2003	2007	2011	2015	2019
ARCOS					147	111	133	162	127
BEMIL					389	307	278	283	269
CARRACEDO					439	316	240	231	215
GODOS					235	178	145	136	152
S.ANDRES					275	231	206	221	217
S.CLEMENTE					407	296	263	194	194
S.TOMAS 1A					297	237	210	205	209
S.TOMAS 1B					219	152	182	189	194
S.TOMAS 4A					266	257	305	267	253
S.TOMAS 4B						221	235	212	216
SAIAR					336	320	270	264	215
STA.MARIA					232	147	136	147	138
	1.802	2.097	1.741	3.090	3.242	2.773	2.603	2.511	2.399
CASCO URBAN	0	0	0	0	782	867	932	873	872

Evolución do Voto do PSOE

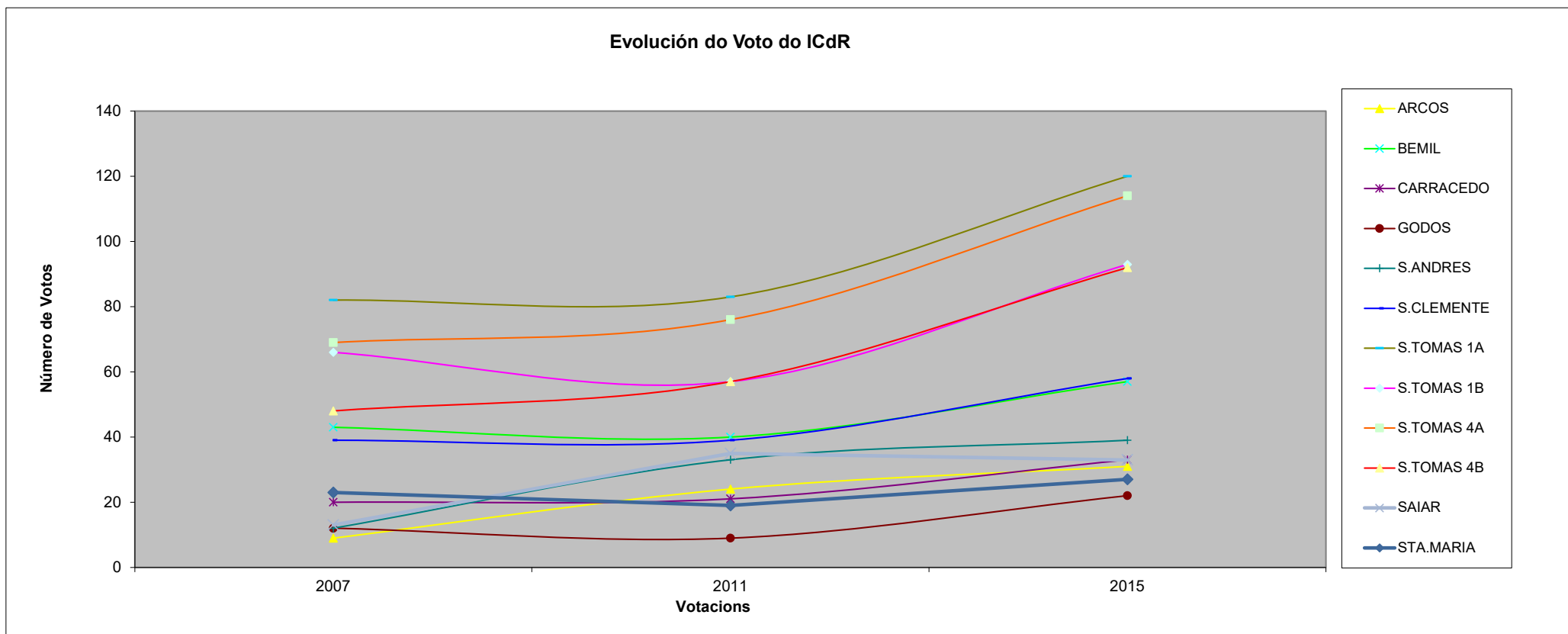


BNG	1987	1991	1995	1999	2003	2007	2011	2015	2019
ARCOS					40	30	19	24	43
BEMIL					42	60	25	55	60
CARRACEDO					38	67	55	46	51
GODOS					24	31	23	30	22
S.ANDRES					54	46	16	38	43
S.CLEMENTE					40	45	24	41	62
S.TOMAS 1A					118	83	48	98	128
S.TOMAS 1B					96	61	38	63	86
S.TOMAS 4A					100	72	64	115	163
S.TOMAS 4B						68	48	64	128
SAIAR					102	48	40	96	94
STA.MARIA					26	31	15	38	35
	0	582	1.189	622	680	642	415	708	915
CASCO URBAN	0	0	0	0	314	284	198	340	505

Evolución do Voto do BNG



ICdR	2007	2011	2015
ARCOS	9	24	31
BEMIL	43	40	57
CARRACEDO	20	21	33
GODOS	12	9	22
S.ANDRES	12	33	39
S.CLEMENTE	39	39	58
S.TOMAS 1A	82	83	120
S.TOMAS 1B	66	57	93
S.TOMAS 4A	69	76	114
S.TOMAS 4B	48	57	92
SAIAR	13	35	33
STA.MARIA	23	19	27
Total	436	493	719



IU	2007	2011
ARCOS	0	0
BEMIL	6	3
CARRACEDO	2	3
GODOS	4	7
S.ANDRES	1	2
S.CLEMENTE	2	5
S.TOMAS 1A	4	5
S.TOMAS 1B	5	7
S.TOMAS 4A	6	10
S.TOMAS 4B	3	4
SAIAR	7	6
STA.MARIA	0	2
	40	54

Evolución do Voto do IU

